

Telstra, Electrical & Communications

Product Catalogue



Electrical Products

Telstra Approved Products

Communications Products

Cost Effective Installation

Easy To Handle

Lightweight & Durable

Telstra, Electrical & Communications

Environment

Vinidex PVC and PE conduits are used to enclose and protect cables and wiring for both power and communications applications.

Along with conduits and ducts, the Vinidex range includes fittings, cable covers, marking tapes, pits and accessories to provide a complete cable management system for use in energy, electrical, data, communications, building, civil infrastructure and mining applications.

Conduits are broadly categorised according to the two main applications as either electrical conduits or communications conduits and colour coded accordingly. Electrical conduits are either orange or grey and communications conduits are white. Vinidex conduits are manufactured from plain wall PVC or Corflo® twin-wall material efficient PVC in straight lengths or in PE100 polyethylene coils.

Vinidex is a quality endorsed company and our conduits and fittings are designed, manufactured and distributed under a quality management system accredited to ISO9001. In addition, Vinidex conduits are manufactured and StandardsMark certified as complying with AS/NZS 2053.2, AS/NZS2053.6 and /or AS/NZS4130.

Vinidex recognises the importance of incorporating environmental sustainability into our business strategies as demonstrated by our achievements in minimising waste and energy in production, post-industrial and post-consumer recycling as well as minimising embodied energy in our products.

In 2002, the Vinyl Council of Australia launched a voluntary product stewardship initiative. Vinidex has been a signatory since its foundation and has consistently met 100% of its product stewardship commitments since then. Vinidex is also a founding member of the Green Building Council of Australia.

Vinidex PVC conduits and fittings are certified to Best Environmental Practice Guidelines (BEP PVC Certificate of Compliance No. 570). Vinidex PVC and PE conduits are also covered by product specific Environmental Product Declarations (EPDs) which are produced and independently verified in accordance with ISO 14025 and EN 15804 and registered with the Australasian EPD Programme (S-P-00716, S-P-00719).

This can assist our customers in sustainable procurement. BEP PVC and EPDs allow product users to claim credit points under the Green Building Council of Australia's Green Star ratings tools and the Infrastructure Council of Australia's Infrastructure Sustainability rating scheme.



green building council australia
MEMBER

Features & Benefits of our Range

Conduits



Vinidex rigid wall PVC conduits are used by Australia's growing telecommunications industry. Vinidex also supplies a wide range of high density polyethylene conduits, in orange, black or white. Both PVC and PE conduits are used in building applications either fully exposed or encased in concrete floors.

Corflo®



Vinidex Corflo® is high performance double-wall PVC pipe with a smooth internal bore and corrugated exterior for electrical applications.

Benefits include:

- Material efficiency
- Lighter weight per unit length
- Strength
- Long pipe lengths
- Excellent handling and durability
- High performance and cost efficiency

Ducting



Vinidex Sub-Duct, with its high-impact strength, is Telstra approved and is used by a large number of installers Australia-wide.

Fittings



Vinidex offer a full range of heavy duty conduit fittings including Electrical, NBN, Communications and Telstra approved products to suit a number of installation needs. Fittings include: bends, elbows, adaptors, bellmouths, sockets, couplings, caps, sleeves and much more.

Cable Cover



Cable Cover is polymeric cable protection for underground cables.

Benefits of using Vinidex cable cover:

- Rounded edges for safer handling
- Complies with Australian Standard AS 4702 - 2000
- Available in custom widths and lengths
- Available in rolls or slabs with metal detectable capabilities
- Comes with the TUV Certificate of Conformance

Pits



Vinidex offers high quality Pits that are non-conductive, resistant to chemicals and high impact resistant with a watertight hermetic screwing/lid system that can be made inaccessible to unauthorised persons. Pits include Telstra approved products.

Solvent Cements and Priming Fluids



Assembly of solvent joints is easy, reliable and efficient with Vinidex solvent cements and priming fluids.

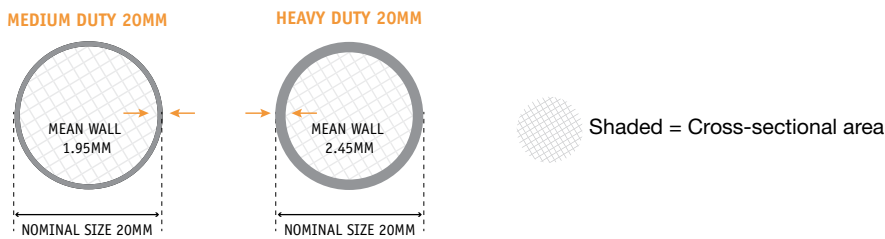
Rigid Conduit

Vinidex PVC conduit and fittings are manufactured from high quality PVC resin and impact modifiers. Conduit pipe is manufactured in light, medium and heavy duty. Please refer to the following for technical information on Vinidex conduit products.

MINIMUM BORE CROSS SECTIONAL AREA (mm²)

NOMINAL SIZE	MEAN OD (mm)	MEDIUM DUTY	HEAVY DUTY
20	19.7 - 20.0	189	165
25	24.7 - 25.0	330	286
32	31.7 - 32.0	568	519
40	39.7 - 40.0	924	850
50	49.7 - 50.0	1486	1379

WALL THICKNESS DIAGRAM EXAMPLE FOR 20MM CONDUIT



Weather Durability

Vinidex Grey Conduits

Vinidex grey conduit is designed to protect cables in a range of above ground electrical installations. It is UV stabilised and labelled with 'T' to indicate that it has protection against solar radiation, meeting the conduit suitability requirements for AS/NZS 5033 (Installation and safety requirements for photovoltaic - PV arrays).

Vinidex Orange Conduits

Vinidex orange conduit is primarily used for buried electrical applications. It is not recommended for long term exposure to UV radiation.

Vinidex White Conduits

Vinidex white conduit is designed to protect communications cables in a range of above ground and buried installations. It is UV stabilised and labelled with 'T' to indicate that it has protection against solar radiation.



Chemical Resistance

Vinidex conduits are resistant to corroding agents such as acids and alkalis however do not use if likely to be exposed to solvents such as ketones, esters, aromatic and chlorinated hydrocarbons. Please refer to Vinidex Chemical Resistance brochure online at www.vinidex.com.au.

Temperature & Expansion

It is recommended that the continuous service temperature does not exceed +60°C or fall below 0°C.

PVC has a relatively high coefficient of thermal linear expansion and allowance should be made for this. It is recommended that a minimum of 0.7mm movement per metre of length per 10°C change in temperature should be provided for.

Saddles should not be tightened to the extent as to prevent longitudinal movement of the pipe. Where there are wide temperature variations conduit clips are recommended, with the true expansion being calculated to ensure adequate movement is allowed for.

CHANGE IN TEMPERATURE °C	CHANGE IN LENGTH OF 4 METRE LENGTH (mm)
5	1.4
10	2.8
15	4.5
20	5.6
25	7.0
30	8.4
35	9.8
40	11.2

Example 1: Using the above table for an example of a 16 metre run installed in a roof space during winter with an ambient temperature of 20°C and an expected summer ambient temperature of 45°C.

- Allow for 25°C change in temperature.
- Therefore with a 25°C change in temperature, the change in pipe length will be 7.0mm for a 4m length of conduit.
- 7.0mm x 4 lengths of conduit = 28.0mm potential change in length.



IP Classification

The IP rating (or International Protection Rating, also referred to as Ingress Protection Rating) consists of the letters IP followed by two digits. It is defined by IEC 60529 and classifies the degree of protection against the intrusion of a solid object (e.g. hands, fingers, screwdriver and dust) as the first numeral and protection against water as the second numeral.

PROTECTION AGAINST INGRESS OF SOLID OBJECT		PROTECTION AGAINST HARMFUL INGRESS OF WATER	
	REQUIREMENTS		PRESCRIPTIONS
0	No protection	0	No protection
1	Full penetration of 50mm diameter sphere not allowed. Contact with hazardous parts not permitted	1	Protected against vertically falling drops of water. Limited ingress permitted
2	Full penetration of 12.5mm diameter sphere not allowed. The jointed test finger shall have adequate clearance from hazardous parts	2	Protected against vertically falling drops of water with enclosure tilted 15° from the vertical. Limited ingress permitted
3	The access probe of 2.5mm diameter shall not penetrate	3	Protected against sprays to 60° from the vertical. Limited ingress permitted
4	The access probe of 1mm diameter shall not penetrate	4	Protected against water splashed from all directions. Limited ingress permitted
5	Limited ingress of dust permitted	5	Protected against jets of water. Limited ingress permitted
6	Totally protected against ingress of dust	6	Protected against strong jets of water. Limited ingress permitted
		7	Protected against the effects of immersion between 15cm and 1m
		8	Protected against long periods of immersion under pressure

As per AS/NZS 3000 Appendix G

IP ratings are often specified for projects and it is important to know that generally any IP rating higher than the one specified will be sufficient for the application. For example, if IP56 is specified you could use IP66, but not IP65 (as the 2nd numeral indicating water protection is too low).

A fully solvent cemented Vinidex conduit system will provide an IP rating of 67 as shown in the table to the right.

VINIDEX CONDUIT SYSTEM

IP RATING

Fully solvent cemented Vinidex conduit system

IP67



Solvent Joint Procedures

Safety Precautions to consider when Solvent Weld Jointing

- Ensure adequate ventilation. Forced ventilation may be required for projects inside buildings, in confined trenches and manholes.
- Solvent cement and priming fluids are highly flammable. Store them in a cool place away from heat, flames and sparks.
- Keep the containers tightly sealed when not in use.
- Do not add thinners or solvents to Vinidex solvent cements and priming fluids.
- Do not use old solvent cement that has become jelly like or expired.
- Do not use dirty or contaminated brushes or rags.
- Use protective hand gloves when applying solvent cement. If solvent cement has made contact on exposed skin it should be washed off immediately with soap and water. Should solvent cement affect the eyes, flush with cool clean water for at least 15 minutes. If solvent cement or primer is swallowed, induce vomiting. Safety and First Aid instructions on the container should be followed.
- Wash hands thoroughly after use.

Special Considerations

Workmanship and correct procedures are essential for solvent joints if durability are to be assured. Solvent jointing should only be carried out in dry conditions above 5°C, by appropriately trained personnel.

Solvent cement jointing is a welding not a gluing process. Priming fluid and solvent cements work by softening the surfaces, so when they are brought together the two PVC surfaces bond together.

It is important that the spigot provides an interference fit in the socket. Do not attempt to make a joint that does not achieve an interference fit when dry.

The actual area of contact between the spigot and the socket may only be a few millimetres. The spigot end must be square to make a good joint. Before proceeding, make sure that the spigots and sockets are not cracked or damaged.

Recommendations

- Minimise the number of joints.
- Introduce no deflections or strain on pipe fittings or joints.
- Check pipes are not damaged before commencing.
- Cut the pipes with only a fine tooth hack saw. Ensure the pipe spigot is cut square, taking care not to chip or crack the pipe. Remove all burrs and sharp edges from the inside and outside edge of the pipe.
- Mark the insertion depth on the pipe spigot. The insertion depth is equivalent to the depth of the corresponding joint socket. The pipe should be marked with a soft pencil or felt pen which does not damage the pipe.
- Dry assemble all pipes and joints. Check that all joints have a full interference fit. Interference fit means that the pipe spigot should not be able to fully penetrate the socket up to the insertion mark without force.
- Mark the pipe and spigot for alignment by drawing a horizontal line across the joint with a soft pencil or felt pen.
- Ensure the pipe spigot and socket are free of dust, dirt and grease, by wiping with a clean cloth dipped in Vinidex priming fluid.
- Coat the socket and the spigot with a thin, even coat of Vinidex Solvent Cement.
- Immediately push together firmly to evenly spread the solvent cement and wipe off any excess Solvent Cement. Do not handle the joint for approximately 5 minutes and allow 10 hours of drying time before any rough handling or testing.



Material Properties

Please see table below for more information on the properties of Vinidex electrical materials.

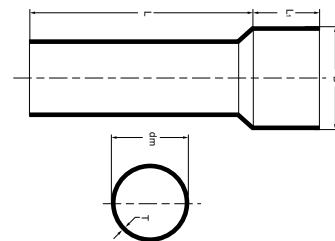
PROPERTY	UNITS	uPVC	POLYETHYLENE
CO-EFFICIENT OF THERMAL EXPANSION	X 10 ⁻⁵	7	20
SPECIFIC HEAT	JK ⁻¹ kg ⁻¹	1250	1900
THERMAL CONDUCTIVITY	w/m°C	.16	.45
FLAMMABILITY		Self extinguishing	Flame propagating
SPECIFIC GRAVITY		1.46	.95
WATER ABSORPTION	%	0.5	<0.1
VICAT SOFTENING TEMPERATURE	°C	80	120
MAX SERVICE TEMPERATURE	°C	60	60
MINIMUM SERVICE TEMPERATURE	°C	-15	0
DIELECTRIC STRENGTH	kV/mm	14	22
VOLUME RESISTIVITY	ΩM	1.2 x 10 ¹⁴	>10 ¹³
SURFACE RESISTIVITY	ΩM	10 ¹⁵	>10 ¹⁵
DIELECTRIC CONSTANT	1MHz	2.7	2.3
DISSIPATION FACTOR	1MHz	.025	.0003

Note: Above values are indicative only.



Telstra Product Range

Vinidex manufacture for Telstra a range of pipe, fittings and accessories for communications.



Conduit



VINIDEX CODE	SIZE (mm)	MEAN MAX O.D. Dm (mm)	WALL THICKNESS T (mm)	MEAN MAX SOCKET OD (mm)	TELSTRA CODE	SOCKET LENGTH L1 (mm)	LENGTH L (m)	BUNDLE QTY	CRATE QTY
11710	20	26.8	1.8	31	73/91	35	4.5	10	700
11730	50	60.4	3.1	68	73/95	64	4.5	5	167
11760	100	114.2	4.6	124	73/207	102	4.5	-	57

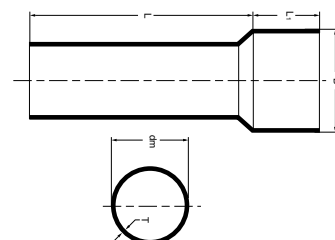
Subduct



VINIDEX CODE	SIZE (mm)	TELSTRA CODE	SDR	LENGTH (m)	MIN QTY
23133	32	73/107	17	550	6
23150	32	73/107	17	250	6

Communications Conduits

Vinidex manufactures a range of communications conduits for the communications industry.



Austel Conduit - White

Manufactured and StandardsMark Certified to AS/NZS 2053.2:2001



VINIDEX CODE	NOM SIZE (mm)	MEAN O.D. Dm (mm)	WALL THICKNESS T (mm)	MEAN MOUTH DIAMETER D (mm)	EFFECTIVE LENGTH L (m)	SOCKET LENGTH L1 (mm)	BUNDLE QTY	CRATE QTY
11640	20	20	1.8	20	4	16	10	1050
11650	25	25	1.8	25	4	20	10	800
11660	32	32	2.1	32	4	25	10	520
11680	50	50	2.8	50	4	40	5	315
11690	80	89	3.7	89	6	76	-	100

HD Communications Conduit - White

Manufactured and Standards Mark Certified to AS/NZS 2053.2:2001



VINIDEX CODE	NOM SIZE (mm)	MEAN O.D. Dm (mm)	WALL THICKNESS T (mm)	MEAN MOUTH DIAMETER D (mm)	EFFECTIVE LENGTH L (m)	SOCKET LENGTH L1 (mm)	BUNDLE QTY	CRATE QTY
11755	100	114	4.5	114	6	99	-	57

NBN / Communications Conduit - White



VINIDEX CODE	NOM SIZE (mm)	MEAN O.D. Dm (mm)	WALL THICKNESS T (mm)	MEAN MOUTH DIAMETER D (mm)	EFFECTIVE LENGTH L (m)	SOCKET LENGTH L1 (mm)	BUNDLE QTY	CRATE QTY
11715	20	26.6	1.6	27	4.5	35	10	700
11719	50	50	3.6		6	0	1	315
11750	100	114	4.5	114	6	99	-	57
10844	100	114	4.3		4.5	99	1	57
10791	50	60	2.7	60	4.5	61	30	167

Corflo® HD Communications Conduit - White

Manufactured and StandardsMark Certified to AS/NZS 2053.6:2001



VINIDEX CODE	NOM SIZE (mm)	MEAN O.D. Dm (mm)	MEAN I.D. (mm)	MEAN MOUTH DIAMETER D (mm)	EFFECTIVE LENGTH L (m)	SOCKET LENGTH L1 (mm)	CRATE QTY
21105	100	114.0	100.0	114.0	6	104	76

Polyethylene Conduits - White



VINIDEX CODE	NOM SIZE (mm)	CLASS	LENGTH (m)	SDR	MIN QTY
22950	110	6	100	17	1
22952	63	6	140	17	1
22965	63	-	140	13.6	1
22976	63	9	140	12	1
22954	110	-	100	13.6	1
22987	110	9	100	12	1

PVC Electrical Conduit

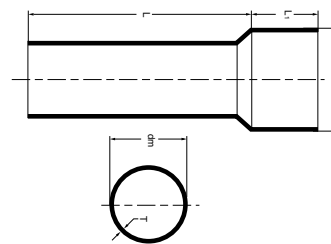
Light Duty Electrical Orange

Manufactured and Standards Mark Certified to AS/NZS 2053.2:2001



VINIDEX CODE	NOM SIZE (mm)	MEAN O.D. Dm (mm)	WALL THICKNESS T (mm)	MEAN MOUTH DIAMETER D (mm)	EFFECTIVE LENGTH L (m)	SOCKET LENGTH L1 (mm)	CRATE QTY
11040	80	89.0	2.4	-	6	76	100
11100	100	114.0	3.0	-	6	99	57
11200	125	140.0	3.7	-	6	115	38
11320	150	160.0	4.2	-	6	124	26
11330	200	225.6	6.1	226.3	6	157	10

These products are of limited application and must be only used to specification. Attention is drawn to the fact that the nominal sizes of conduits 16-63mm refer to the outside diameter, whereas sizes 80-150mm refer to approximate internal diameter. 6 metre lengths can be made available for HD conduit above 25mm. Not all products are available ex-stock. Please confirm availability at time of order.



Medium Duty Electrical Grey

Manufactured and StandardsMark Certified to AS/NZS 2053.2:2001



VINIDEX CODE	NOM SIZE (mm)	MEAN O.D. Dm (mm)	PIPE CLASS	WALL THICKNESS T (mm)	MEAN MOUTH DIAMETER D (mm)	EFFECTIVE LENGTH L (m)	SOCKET LENGTH L1 (mm)	BUNDLE QTY	CRATE QTY
10000	16	16.0	MD	1.6	16	4	13	20	1360
10020	20	20.0	MD	1.8	20	4	16	10	1050
10040	25	25.0	MD	1.8	25	4	20	10	800
10060	32	32.0	MD	2.1	32	4	25	10	520
10080	40	40.0	MD	2.4	40	4	32	5	330
10100	50	50.0	MD	2.8	50	4	40	5	315

Heavy Duty Electrical Orange

Manufactured and StandardsMark Certified to AS/NZS 2053.2:2001



VINIDEX CODE	NOM SIZE (mm)	MEAN O.D. Dm (mm)	PIPE CLASS	WALL THICKNESS T (mm)	MEAN MOUTH DIAMETER D (mm)	EFFECTIVE LENGTH L (m)	SOCKET LENGTH L1 (mm)	BUNDLE QTY	CRATE QTY
10700	20	20.0	HD	2.3	20	4	16	10	1050
10720	25	25.0	HD	2.5	25	4	20	10	800
10740	32	32.0	HD	2.7	32	4	25	10	520
10760	40	40.0	HD	3.1	40	4	32	5	330
10780	50	50.0	HD	3.4	50	4	40	5	315
10800	63	63.0	HD	3.9	63	4	50	-	193
21020*	63	63.0	HD	4.6	89	4	73	-	100
21030*	80	89.0	HD	4.6	89	4	73	-	100
21040*	100	114.0	HD	5.9	114	4	99	-	57
10840	100	114.1	HD	5.9	114.8	4	99	-	57
10860	125	140.0	HD	7.2	140	4	115	-	38
21050*	125	140.0	HD	7.2	140.8	4	115	-	38
10880	150	160.0	HD	8.3	160.8	4	124	-	26
21060*	150	160.0	HD	8.3	160	4	124	-	26
21065*	200	225.6	HD	11.7	226.3	6	157	-	10

*Sandwich

Polyethylene Electrical Conduit

Polyethylene conduit for electrical applications is coloured orange. PE is available in long lengths in coils, is flexible and can be installed below ground using ploughing-in, directional drilling or open trench techniques.



VINIDEX CODE	SDR	NOM SIZE (mm)	MEAN I.D. (mm)	WALL THICKNESS T (mm)	EFFECTIVE LENGTH L (m)	MINIMUM QTY
23097						
23023	13.6	63	53	4.7	100	1
22985	13.6	110	93	8.1	100	1
23021	13.6	125	106	9.2	100	1
23068	13.6	140	118	10.3	100	1
28985						
28753	13.6	180	153	13.3	12	1
22996	12	50	41.2	4.4	100	1
22993	12	63	52.4	5.3	100	1
22999	12	63	52.4	5.3	100	1
23000	12	110	91.6	9.2	100	1
23007	12	125	104.2	10.4	100	1

Corflo® Heavy Duty Orange Electrical Conduit

Manufactured and StandardsMark Certified to AS/NZS 2053.6:2001



VINIDEX CODE	NOM SIZE (mm)	MEAN O.D. Dm (mm)	MEAN I.D. (mm)	MEAN MOUTH DIAMETER D (mm)	EFFECTIVE LENGTH L (m)	SOCKET LENGTH L1 (mm)	CRATE QTY
21135	100	114	100	114.9	6	99	76
21153	125	140	122	140.9	6	110	38
21139	150	160	140	161.1	6	110	26

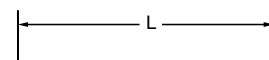
Please note: Corflo® conduits are compatible and interchangeable with solid wall conduits and fittings.



Cable Cover

Manufactured to AS/NZS 4702:2000

Cable Cover is polymeric cable protection available in rolls or sheets. It and provides increased protection for underground cables whilst the rounded edges are ideal for safer handling.



⚠ DANGER - BURIED ELECTRICITY MAIN BELOW

Cable Cover Heavy Duty

Manufactured to AS/NZS 4702:2000



VINIDEX CODE	NOM SIZE (mm)		LENGTH (m)	WEIGHT (kg)	PALLET QTY
98507	150	Doublesided	25	18	24
98509	150	Doublesided	2	1.44	700
98610	150		2	1.44	700
98615	150		25	18	24
98616	150		150	105	6
98608	200		20	20	25
98620	200	Single Print	2	1.96	500
98624	200	Single Print	100	98	5
98625	200	Single Print	25	24.50	20
98626	200		150	150	5
98658	200		175	165	5
98506	300		100	144	3
98545	300	Single Print	25	36	12
98606	300		1.2	1.7	300
98607	300		10	15.63	24
98634	300	Blank	15	21.60	15
98635	300	Single Print	2	1.62	300
98646	300	Single Print	15	2.14	15
98648	300			1.62	300
98649	300			2.14	300
98611					
98613					

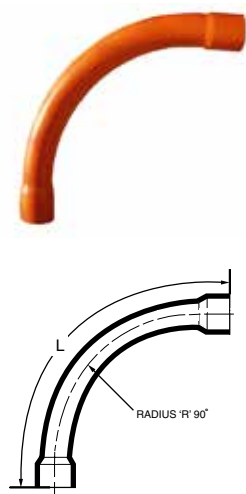
Heavy duty cover strip conforms to the requirements of E.S.A.A. Special widths are available - Subject to quotation and lead time. Please contact the Vinidex Sales Team. Coils can be purchased in widths of up to 900m. Coils can be manufactured up to 200m in length.

PVC Electrical Fittings

Vinidex offers a range of electrical conduit and ducting suitable for both commercial and domestic applications.

- Bends
- Couplings
- Bellmouth x socket, cap x socket
- Caps

Heavy Duty Orange Bends Socket x Socket

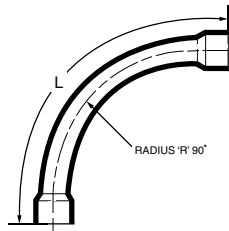


VINIDEX CODE	SIZE (mm)	DEGREE	C'LINE RADIUS (mm)	LENGTH (mm)	MINIMUM QTY
30690	20	45	152	150	1
30810	20	90	152	292	1
30700	25	45	152	160	1
30820	25	90	152	298	1
30710	32	45	304	331	1
30830	32	90	304	572	1
30720	40	45	304	325	1
30840	40	90	304	610	1
30730	50	45	304	356	1
30860	50	90	304	635	1
30740	63	45	304	419	1
30870	63	90	304	640	1
32703	80	11.25	584	-	1
30610	80	22.5	584	-	1
30677	80	30	584	-	1
30750	80	45	356	590	1
30880	80	90	356	800	1
30590	100	11.25	584	-	1
30630	100	22.5	584	-	1
30680	100	30	584	-	1
30790	100	45	1200	-	1
30770	100	45	460	710	1
30900	100	90	460	1067	1
30795	125	45	600	1075	1
30950	125	90	635	1895	1
30600	150	11.25	635	-	1
30650	150	22.5	635	-	1
30685	150	30	635	-	1
30800	150	45	635	1525	1
30960	150	90	635	1895	1
30970	150	90	760	1800	1
30985	150	90	1200	2385	1

Please note: Vinidex can supply fabricated fittings for custom applications. Please contact the Vinidex Sales Team.

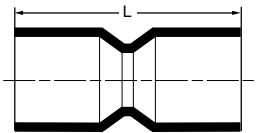


Light Duty Bends Socket x Socket



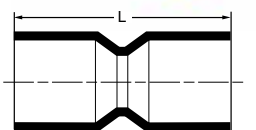
VINIDEX CODE	SIZE (mm)	DEGREE	LENGTH (mm)	C'LINE RADIUS (mm)	MINIMUM QTY
31990	80	45	615	450	1
31994	80	45	1265	1200	1
31995	80	45	1265	1200	1
32000	80	45	1760	1830	1
32080	80	90	1100	450	1
32010	100	45	1937	1830	1
32009	100	45	1280	1200	1
32086	100	90	784	1830	1
32090	100	90	1100	500	1
31037	125	45		1830	1
31068	125	90		1200	1
31089	150	90		635	1

Couplings - Heavy Duty Orange



VINIDEX CODE	SIZE (mm)	LENGTH (mm)	CARTON QTY	MINIMUM QTY
31180	25	50	50	1
31190	32	75	15	1
31200	40	100	20	1
31210	50	155	122	1
31220	63	200	40	1
31230	80	180	50	1
31240	100	280	20	1
31247	125	230	11	1
31250	150	360	9	1
31255				

Couplings - Light Duty Orange Socket - Socket



VINIDEX CODE	SIZE (mm)	LENGTH (mm)	CARTON QTY	MINIMUM QTY
32150	80	300	35	1
32160	100	300	18	1
32170	125	300	12	1
32180	150	300	9	1

Slip Couplings

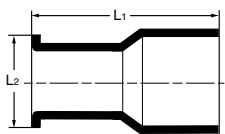


VINIDEX CODE	SIZE (mm)	LENGTH L x L1 (mm)	CARTON QTY	MINIMUM QTY
32124				1
32127				1
32126				1
32128				1
32129				1

Corflo® Slip Coupling

VINIDEX CODE	SIZE (mm)	LENGTH (mm)	CARTON QTY	MINIMUM QTY
33650	125	265	14	1

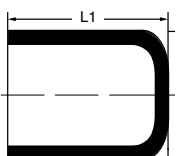
Bellmouth x Socket - Heavy Duty Orange Straight



VINIDEX CODE	SIZE (mm)	LENGTH L x L1 (mm)	CARTON QTY	MINIMUM QTY
31270	50	120 x 70	100	1
31280	63	200 x 70	50	1
31290	80	200 x 130	30	1
31300	100	200 x 140	24	1
31310	125	200 x 198	12	1
31320	150	200 x 200	12	1
31047				

Vinidex can make these items to custom length if desired.

Cap Heavy Duty Orange



VINIDEX CODE	SIZE (mm)	LENGTH L1 (mm)	BAG QTY	MINIMUM QTY
31430	25	-	20	1
31435	40	-	20	20
31438	50	-	10	10
31440	63	90	10	10
31450	80	110	5	5
31460	100	150	5	5
31465	125	180	-	1
31470	150	200	2	2



Communications Fittings

Vinidex manufactures a range of high quality and reputable communication fittings for the communications industry.

Austel Bends

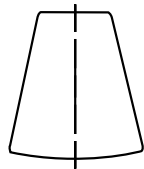


VINIDEX CODE	SIZE (mm)	DEGREE	LENGTH (mm)	C'LINE RADIUS (mm)	MINIMUM QTY
32440	20	45	166	152	1
32450	20	90	292	152	1
32460	25	45	178	152	1
32470	25	90	298	152	1
32480	32	45	331	304	1
32490	32	90	572	304	1
32500	50	45	356	304	1
32510	50	90	635	304	1
32512	80	45	521	375	1
32515	80	45	698	600	1
32521	80	90	1204	375	1
32669	100	45	650	450	1
32670	100	45	700	584	1
32682	100	90	1145	584	1

Communications Bends

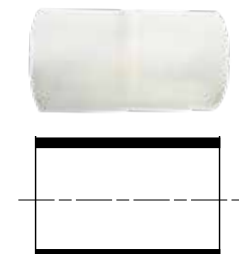
32680	100	90	1049	450	1
32669	100	45	650	450	1
32670	100	45	700	584	1

Polystyrene Plug



VINIDEX CODE	SIZE (mm)	CRATE QTY	MINIMUM QTY
32250	40	-	1
32270	80	100	1
32280	100	15	1
32285	125	1	1
32290	150	1	1

Slip Couplings - Communications

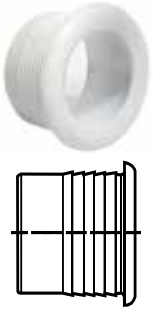


VINIDEX CODE	SIZE (mm)	LENGTH (mm)	CARTON QTY	MINIMUM QTY
33129	80	315	1	1
32915	50	200	50	1
31243	100	300	16	1

Telstra & NBN Product Range - Fittings

Vinidex manufacture for Telstra a range of pipe, fittings and accessories for communications.

Pit Bush



VINIDEX CODE	SIZE (mm)	TELSTRA CODE		CARTON QTY	BAG QTY	MINIMUM QTY
30115	20	73/100		-	20	20
30118	35	73/069		-	-	-
30130	50	73/70		-	20	20
98870	63	73/143		200	-	1
30131	80			10	-	1
30150	100	73/102		60	-	1

End Caps



VINIDEX CODE	SIZE (mm)	TELSTRA CODE		CARTON QTY	BAG QTY	MINIMUM QTY
30100	20	73/58		200	-	20
30105	50	73/65		80	10	10
30106	100			100	-	10

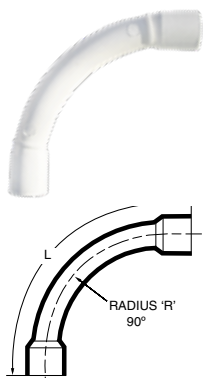
NBN Communication Bends



VINIDEX CODE	SIZE (mm)	DEGREE	C'LINE RADIUS	MINIMUM QTY
32184	20	15	300	10
32185	20	22.5	300	10
32186	20	30	300	10
32187	20	45	300	10
32188	20	90	300	10
32189	50	15	300	10
32190	50	22.5	300	10
32191	50	30	300	10
32192	50	45	300	10
32193	50	90	300	10
32194	100	15	800	10
32195	100	22.5	800	10
32196	100	30	800	10
32198	100	60	800	10
32199	100	90	800	10

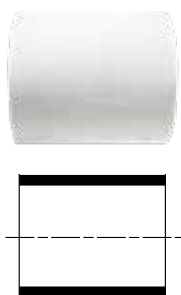


Telstra Communication Bends



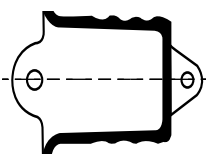
VINIDEX CODE	SIZE (mm)	TELSTRA CODE		DEGREE	C'LINE RADIUS		MINIMUM QTY
30110	20	73/281	F-F	90	100		10
32570	20	73/271	F-F	90	305		10
33370	50	73/119	M-F	45	305		10
33380	100	73/121	M-F	45	800		10
32550	50	73/276	F-F	90	305		10
32553	50	73/110	M-F	90	800		10
32740	100	72/222	M-F	22.5	500		10
33208	100	73/286	F-F	90	356		10
33210	100	73/302	F-F	90	508		10
33219	100	73/109	M-F	90	800		10
32187	20		F-F	45	300		10
33365	50		F-F	22.5	305		10
32199	100		F-F	90	800		10

Coupling



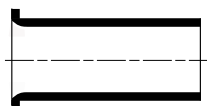
VINIDEX CODE	SIZE (mm)	TYPE	TELSTRA CODE		BAG QTY	MIN QTY
30205	20		73/37		20	20
30230	50		73/48		10	10
32710	100	TYPE 1	73/241		20	-
32240	110 x 110	COMMS - PE	73/243		25	-
33438	63-50	PVC	73/176		-	1
33060	100	PVC	73/112		-	-
33446	100 x 110	PVC - PE	73/185		-	1

Rubber End Plugs



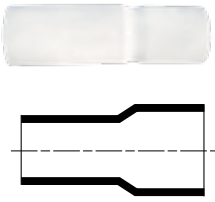
VINIDEX CODE	SIZE (mm)	TELSTRA CODE		CARTON QTY	MINIMUM QTY
30050	20	73/216		800	1
30655	50	73/218		150	1
98911	100	73/44	TAPERED PLUG	75	1

Bellmouth



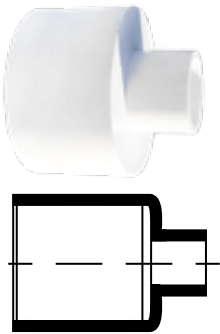
VINIDEX CODE	SIZE (mm)	TELSTRA CODE		CARTON QTY	MINIMUM QTY
31355	100	73/52		24	1

HDPE to UPVC Conduit Adaptor



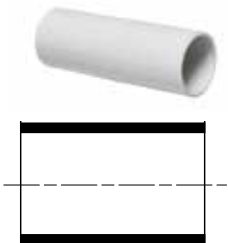
VINIDEX CODE	SIZE (mm)	TELSTRA CODE	DESCRIPTION	MINIMUM QTY
33446	110		PE Adaptor	1
33438	63-50mm	73/176	Telstra Approved ✓	1

Reducing Coupling



VINIDEX CODE	SIZE (mm)	TELSTRA CODE		BAG QTY	CARTON QTY	MINIMUM QTY
30200	20x10	73/209	Telstra Approved ✓	-	-	-
34990	50X20	73/179	Telstra Approved ✓	10	100	10
33437	50X35	73/309	Telstra Approved ✓	-	-	1
35060	100X50	73/180	Telstra Approved ✓	-	28	1
35070	100X80	73/311	Telstra Approved ✓	-	28	1

Slip Sleeve



Telstra Approved ✓

VINIDEX CODE	SIZE (mm)	TELSTRA CODE		CARTON QTY	MINIMUM QTY
33063	20	73/56		50	1
33068	50	73/116		100	1
33060	100				1

Repair Sleeve

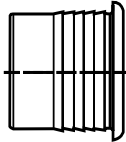


Telstra Approved ✓

VINIDEX CODE	SIZE (mm)	TELSTRA CODE		CARTON QTY	MINIMUM QTY
33455	20	73/305		75	1
33460	35	73/306		40	1
33470	50	73/307		25	1
33472	80	73/308		12	1
33475	100	73/285		12	1



Split Bush



Telstra Approved ✓

VINIDEX CODE	SIZE (mm)	TELSTRA CODE	MINIMUM QTY
98891	20	73/188	20
98893	50	73/190	20

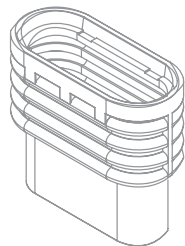
Cable Bearers



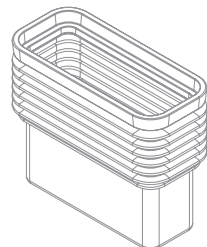
Telstra Approved ✓

VINIDEX CODE	SIZE (mm)	TELSTRA CODE	MINIMUM QTY
39618	225	426/07	1
39619	370	426/08	1
39620	480	426/09	1

Pits and Lids

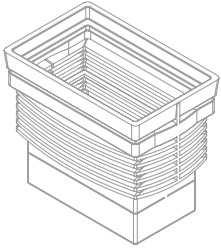


VINIDEX CODE	TELSTRA CODE	SIZE (mm)	TYPE	NUMBER REQUIRED
P2 PIT ASSEMBLY				
98720	99/98	660 x 285 x 570	PIT BODY	1
98722	99/59	616 x 46 x 245	CONCRETE COVER - TELSTRA	1
98721		616 x 46 x 245	CONCRETE COVER - COMMUNICATION	1
98731		616 x 46 x 245	CONCRETE COVER - NBN	1
98734		616 x 46 x 245	CONCRETE COVER - ELECTRICAL	1
98803		651 x 50 x 499	NBN PIT COMPOSITE	1

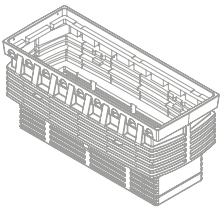


VINIDEX CODE	TELSTRA CODE	SIZE (mm)	TYPE	NUMBER REQUIRED
P3 PIT ASSEMBLY				
98740	99/17	780 x 345 x 630	PIT BODY	1
98745	99/60	616 x 46 x 245	CONCRETE COVER - TELSTRA	1
98721	99/17	616 x 46 x 245	CONCRETE COVER - COMMUNICATION	1
98797		616 x 46 x 245	CONCRETE COVER - ELECTRICAL	1

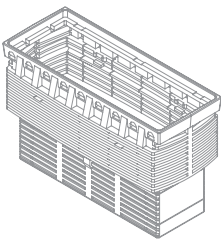
Pits and Lids (cont.)



VINIDEX CODE	TELSTRA CODE	SIZE (mm)	TYPE	NUMBER REQUIRED
P5 PIT ASSEMBLY				
98780	99/165	710 x 455 x 650	PIT BODY ROTO MOULDED	1
98781	99/165B	580 x 330 x 640	PIT BODY INJECTION MOULDED	1
98783	99/182		PIT BODY - SPLIT	1
98789	99/66	648 x 398	COMPOSITE COVER - TELSTRA	1
98792	99/66C	648 x 398	CONCRETE COVER - COMMUNICATION	1
98732		648 x 398	CONCRETE COVER - NBN	1
98791			CONCRETE COVER - ELECTRICAL	1
98884	99/177	640 x 390 x 3	BLANK GASKET	1
98795	99/173	710 x 400 x 225	PIT EXTENSION COLLAR	1
98804		651 x 50 x 499	NBN PIT COMPOSITE	1



P6 PIT ASSEMBLY				
98800	99/161	1365 x 550 x 670	PIT BODY	1
98886	99/164	640 x 556 x 3	PIT GASKET	2
98811	99/62	651 x 50 x 499	COMPOSITE COVER - TELSTRA	2
98733		648 x 398 x 50	CONCRETE COVER - NBN	2
98812	99/62C	648 x 398 x 50	CONCRETE COVER - COMMUNICATION	2
98798		-	CONCRETE COVER - ELECTRICAL	2
98817	99/67	1220 x 45 x 570	CROSS BAR - DUCTILE IRON	1



P8 PIT ASSEMBLY				
98840	99/162	1355 x 545 x 895	PIT BODY	1
98811	99/62	651 x 50 x 499	COMPOSITE COVER - TELSTRA	2
98817	99/67	1220 x 450 x 570	CROSS BAR - DUCTILE IRON	1



P9 PIT ASSEMBLY				
98860	99/163	2040 x 585 x 900	PIT BODY	1
98811	99/62	651 x 50 x 499	COMPOSITE COVER - TELSTRA	3
98812	99/62C	648 x 398 x 50	CONCRETE COVER - COMMUNICATION	3
98733		-	CONCRETE COVER - NBN	3
98817	99/67	1220 x 450 x 570	CROSS BAR - DUCTILE IRON	2
98886	99/164	640 x 556 x 3	BLANK GASKET	3



Accessories



VINIDEX CODE	SIZE (mm)	TELSTRA CODE	TYPE	MINIMUM QTY
98819	1220 x 450 x 570	740/81	PIT EARTH STRAP	1
98867	200	77/106	CONCRETE PILLAR BASE	1
98865		99/174	REINSTATEMENT KIT TE 1051 XA	1
33154	200	77/102	JOINTING POST OVERLAY TELSTRA	1
39615			EARTHING KIT MANHOLE - 9M WIRE	1
98900			316SS HEX SCREWS	100

Rope



VINIDEX CODE	SIZE (m)	TELSTRA CODE	TYPE	LENGTH (m)	MINIMUM QTY
98890	6	675/294	2 ST BLUE, 1 ST YELLOW PP	400	1
98880	3	675/83	POLYPROPYLENE ROPE	1000	1

Warning Signs

VINIDEX CODE	TELSTRA CODE	TYPE	MINIMUM QTY
39603	148/276	SIGN - DANGER NON STD ELECT	1
39604	148/277	SIGN - WARNING GAS MAIN	1
39605	148/278	SIGN - WARNING WATER MAIN	1

Visual Warning Tape



VINIDEX CODE	SIZE (m)	TYPE	LENGTH (m)	MINIMUM QTY
85053	150	Orange Early Warning Tape	500	1
85058	150	White Warning Tape	500	1
84609	100	MD White Tape	250	1
84611	100	MD Orange Tape	250	1

Solvent Cements & Priming Fluid

Manufactured to AS/NZS 3879:1995

Priming Fluid - Red



VINIDEX CODE	SIZE	MINIMUM QTY
82341	250 ml	1
82342	500 ml	1
82343	1 L	1
82344	4 L	1
82345	20 L	1

For use in Pressure and Non-Pressure applications.

Solvent Cement - Blue



VINIDEX CODE	SIZE	TYPE	MINIMUM QTY
82430	125 ml	TYPE N	1
82440	1 L	TYPE N	1
82432	250 ml	TYPE N	1
82434	500	TYPE N	1
82436	1 L	TYPE N	1
82438	4 L	TYPE N	1
82439	20 L	TYPE N	1

For use in Pressure and Non-Pressure applications.





Vinidex Pty Limited
ABN 42 000 664 942

Level 4, 26 College Street
Darlinghurst NSW 2010
PO Box 747, Darlinghurst NSW 1300

CUSTOMER SERVICE

Phone: 13 11 69

Fax: 13 24 43

Email: sales@vinidex.com.au

Web: www.vinidex.com.au

