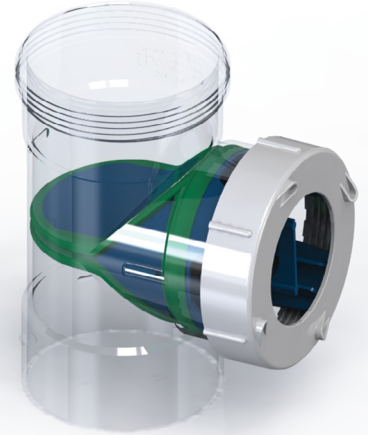


Vinidex IO Test Plug

Vinidex
by **alixis**

Plug into the fast, effective pressure testing solution.

Are you frustrated with losing test plugs down the drain or looking for a faster, safer way to pressure test? The Vinidex IO Test Plug is an innovative new solution designed to improve safety, performance and reliability. Compatible with the full range of Vinidex IOs, it has a simple finger-pull handle for insertion and removal, and a keyway-slot system for perfect alignment each time.



Safe

Ingenious finger-pull handle design ensures safe insertion and removal.



Fast and easy

Integrated keyway ensuring perfect inspection opening alignment every time.



No more lost plugs

Easy installation and removal ensuring the IO Test Plug never gets lost down the drain.



Mess-free

Prevents water from spilling out after testing, removing any mess or clean-up requirements.

Care and maintenance:

The Vinidex IO Test Plug must:

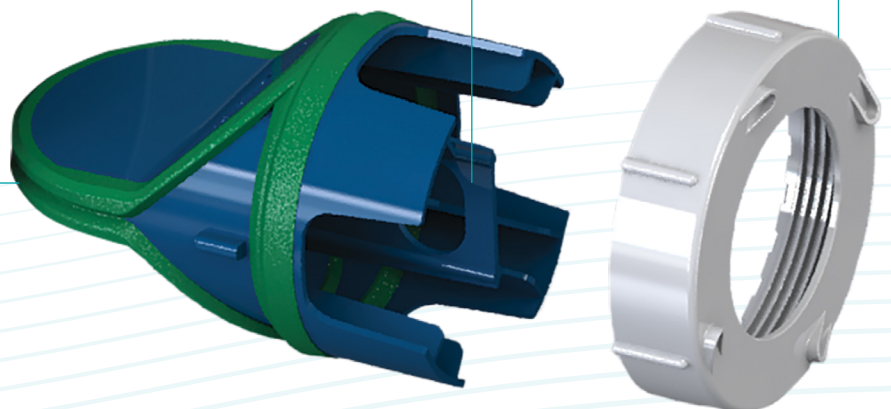
- Be stored in the original packaging, out of direct sunlight and in a manner that will not damage any part of the fitting.
- Regularly cleaned using soapy water and a damp cloth.
- Each of the rubber seals on the Vinidex IO Test Plug should be re-lubricated before each series of tests to help maintain the integrity of the seal and ensure the insertion and removal force remains low.

Adjust rubber seal pressure by tightening IO screw cap or optional Screw cap for visual inspection.

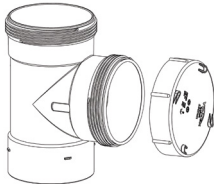
Simple finger-pull handle insertion device.

Optional Screw Cap for visual inspection of the IO Test Plug.

Product code: 46429
Sold separately from the IO Test Plug.

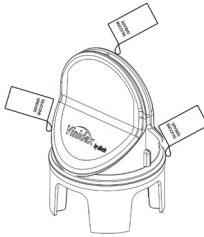


1



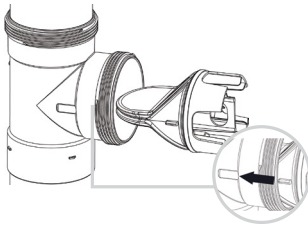
Remove IO Screw Cap, then remove Inspection Tee Plug (57048).

2



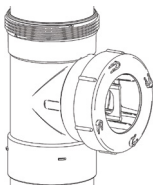
Lubricate the rubber seals with the included lubricant sachet (58291) before the first use. Additional lubricant should be applied before each series of tests to ensure the insertion and removal force remains low.

3



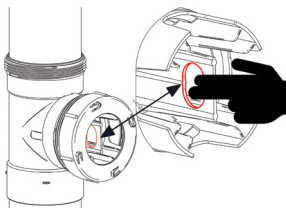
Ensure to align the keyway to the slot and the integrated finger pull is vertical in the inspection opening before starting insertion. This will correctly orient the rubber seals of the IO Test Plug. If not correctly aligned, leaks may occur.

4



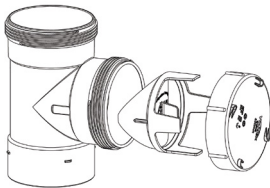
Increase the pressure on the rubber seal by hand as required, tighten the IO Screw Cap to ensure leak free testing.

5



Once test is complete, loosen cap while keeping thread engaged to release pressure. Slowly remove IO Screw Cap by no more than a 3/4 turn (avoid standing directly in front of the IO Test Plug). Using integrated finger-pull, slowly pull IO Test Plug back about 5mm to release any remaining water.

6



Once the water has drained remove the IO Test Plug, re-insert the Inspection Tee Plug (57048) and replace and tighten the IO Screw Cap.



To learn more about the IO Test Plug scan the QR code.

IO Test Plug is available at all great plumbing and hardware stores stocking Vinidex pipe fittings.



Recommended Screw Cap for visual inspection of the IO Test Plug.

Product code: **46429**

NOT INCLUDED



Note: IO Test plug is only compatible with Vinidex product.